

Randall Train Room - Automation ON OFF

Procedure to turn Automation ON

1- TURN ON the “Layout & Outlet” Power. Flip both up.

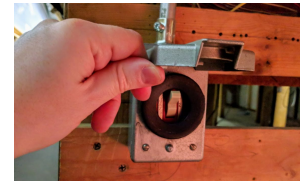
This is located in the locked cabinet in the Pullman Car.

The “layout & outlet” power must be **the first on** and always **the last off**.



2- TURN ON the DCC Power Switch.

It is located under the layout in a gray protective box. Flip it up.



3- VERIFY LIGHTS come up on the Valley Panel.

⇒ If they do not, you need to reset the Auxiliary Power Supply under the layout (see Staff Manual for details).

4- WAIT 1 MINUTE for the Automation Computer to start and display a map of the layout.

Please ACTUALLY wait for the computer to finish starting before you move on.

Do NOT proceed until you see the map on the computer as shown aside.



5- VERIFY the “Automation ON / OFF” toggles are UP on the “Valley Panel 1”.

There are 2 of them labeled “Mainline” and “Branchline”.
Flip them up for automation ON.



6- VERIFY that the trains START & MOVE.

Walk up to the main passenger station

VERIFY that walking next to the station ACTUALLY activates one of the trains.

By design, the automation will not start if the trains are not at the proper location.



IMPORTANT: You are not done till you have VALIDATED that the trains *actually* move.

If the automation fails to start, you MUST do the following:

1. Note which step failed above.
2. TURN OFF the DCC Power Switch (step 2) and “Layout & Outlet” Power (step 1).
3. NOTIFY us by email or phone and indicate clearly WHICH STEP failed.

Contacts: Raphaël <raphael@alfray.com> // Jim Evans <fivechime@aol.com> 510-464-6156

Randall Train Room - Automation ON OFF

Procedure to turn Automation OFF

1- BEFORE 4:50 PM.

If you must stop the automation BEFORE 4:50 PM:

- Go to the “Valley Panel 1” and turn OFF both “Automation” toggles.
- Next: if trains are running, you **MUST** wait for them to come back to their station. Then go to step 3.



2- AFTER 4:50 PM.

The computer automatically stops the automation at 4:50 PM.

If a train just started right before 4:50 PM, it will stop and return to the station as soon as possible. To turn it off after 4:50 PM, you do *not* need to touch the “Automation” toggles on “Valley Panel 1”.

3- VERIFY that the TWO trains are stopped in front of the station.

Walk up to the main passenger station and VERIFY that both trains are at the expected location (see Staff Manual for details).

If they are not, check to see if they are running and WAIT for them to come back to the station.

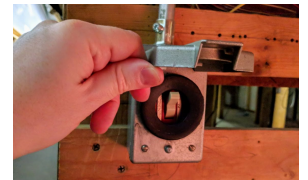


IMPORTANT :

Do NOT proceed to the next step until all trains are IDLE at their respective station.

4- Turn off the DCC Power Switch next to the computer.

⇒ Do NOT touch the computer. It will automatically and safely shut off by itself.



5- Turn off the “Layout & Outlet” Power next to the sliding door. Flip both down.



If the automation has failed and trains do not run, you MUST do the following:

1. Note which step failed above.
2. **TURN OFF** the DCC Power Switch (step 4) and “Layout & Outlet” power (step 5),.
3. **NOTIFY us by email or phone and indicate clearly WHICH STEP failed.**

Contacts: Raphaël <raphael@alfray.com> // Jim Evans <fivechime@aol.com> 510-464-6156